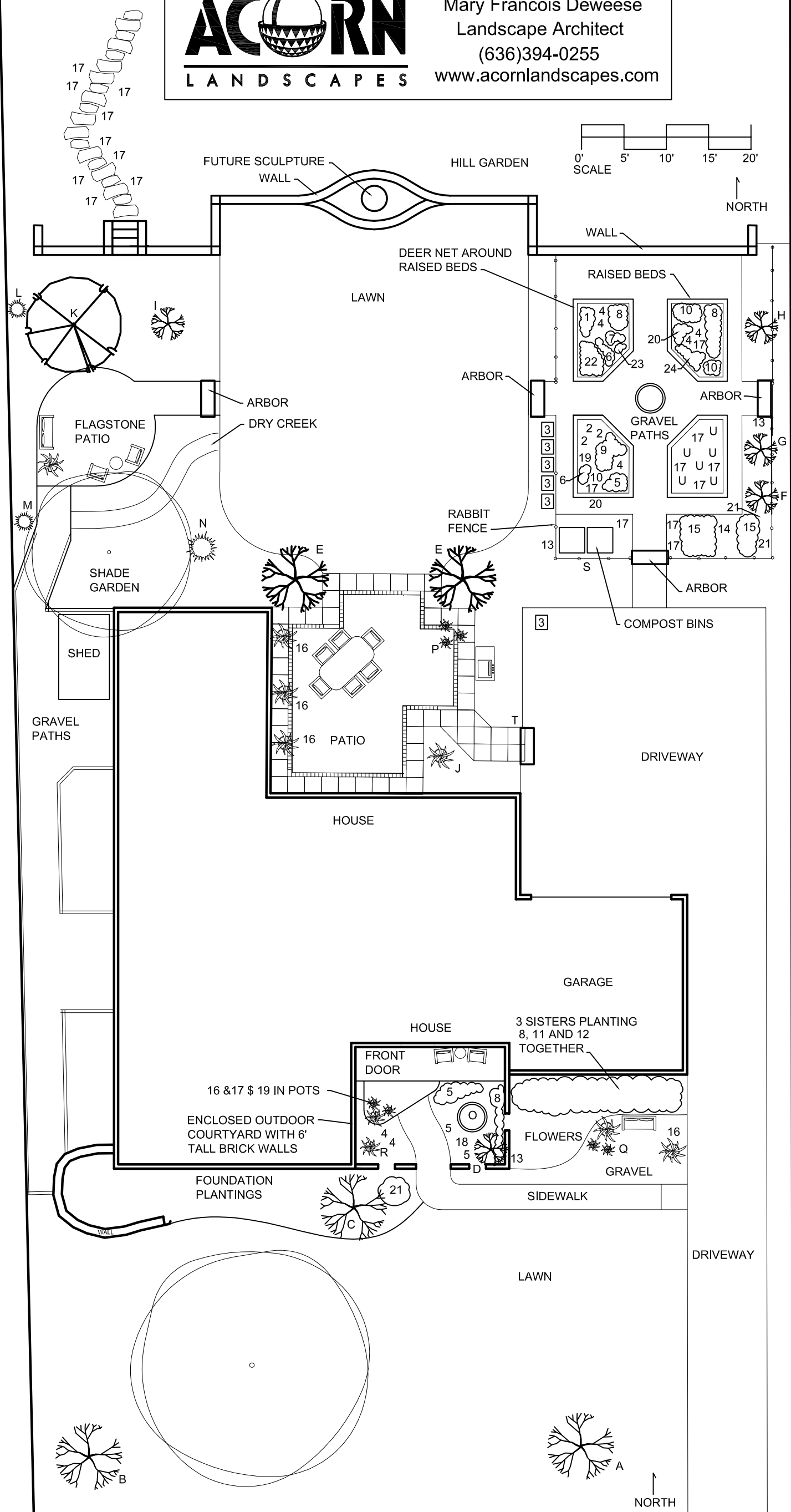


WWW.SPRAWLSTAINABLE.COM



copyrights and design by
Mary Francois Deweese
Landscape Architect
(636)394-0255
www.acornlandscapes.com



NOTES:

THE ONLY PLANTS SHOWN IN THIS DRAWING ARE THE EDIBLE PLANTS AND A FEW MAJOR SHADE TREES.

LOT SIZE IS APPROX 175' X 90'

TOTAL DEDICATED VEGETABLE GROWING BEDS 400 SF (260 SF IN THE BACKYARD AND 140 SF IN THE FRONT YARD)

FRUIT GROWING IS DISPERSED THROUGHOUT YARD AND ORNAMENTAL BEDS

FRUIT TREES

- A - DWARF 2 ON 1 PLUM PLANTED 2010
- B - DWARF APRICOT PLANTED 2010
- C - DWARF SOUR PIE CHERRY PLANTED 2010
- D - SUPER DWARF BING CHERRY PLANTED 2010
- E - AUTUMN BRILLIANCE SERVICEBERRY PLANTED 2004
- F - FREEDOM APPLE PLANTED 2009
- G - LIBERTY APPLE PLANTED 2009
- H - 3 ON 1 ASIAN PEAR PLANTED 2009
- I - PRUNE PLUM PLANTED 2010
- J - PATIO PLANTER SUPER DWARF NECTARINE PLANTED 2010
- K - KOUSA DOGWOOD PLANTED 2004

OTHER FRUITS

- L - JOSTABERRY PLANTED 2009
- M - PINK GOOSEBERRY PLANTED 2010
- N - WHITE CURRANT PLANTED 2009
- O - STRAWBERRIES PLANTED 2010
- P - BLACKBERRIES IN CONTAINERS PLANTED 2010
- Q - RASPBERRIES IN CONTAINERS PLANTED 2010
- R - CELESTE FIG IN CONTAINERS PLANTED 2010
- S - HARDY KIWI FRUIT VINE PLANTED 2008
- T - GRAPE PLANTED 2010
- U - BLUEBERRIES PLANTED 2009

VEGETABLES

- 1 - EGGPLANT
- 2 - TOMATO
- 3 - POTATOES IN CONTAINERS
- 4 - PEPPERS
- 5 - LETTUCE / SPINACH AND SALAD GREENS
- 6 - CARROTS
- 7 - BEETS
- 8 - POLE BEANS
- 9 - BUSH BEANS
- 10 - CAULIFLOWER
- 11 - CORN
- 12 - SUMMER SQUASH
- 13 - CUCUMBER
- 14 - PUMPKIN
- 15 - ASPARAGUS
- 16 - SWEET POTATO
- 17 - HERBS
- 18 - SWISS CHARD
- 19 - PEAS
- 20 - RADICCHIO
- 21 - ARTICHOKE
- 22 - GARLIC
- 23 - ONIONS
- 24 - CABBAGE